

Eagles Landing
Eagles Landing Drive
Lakeland, Florida 33810

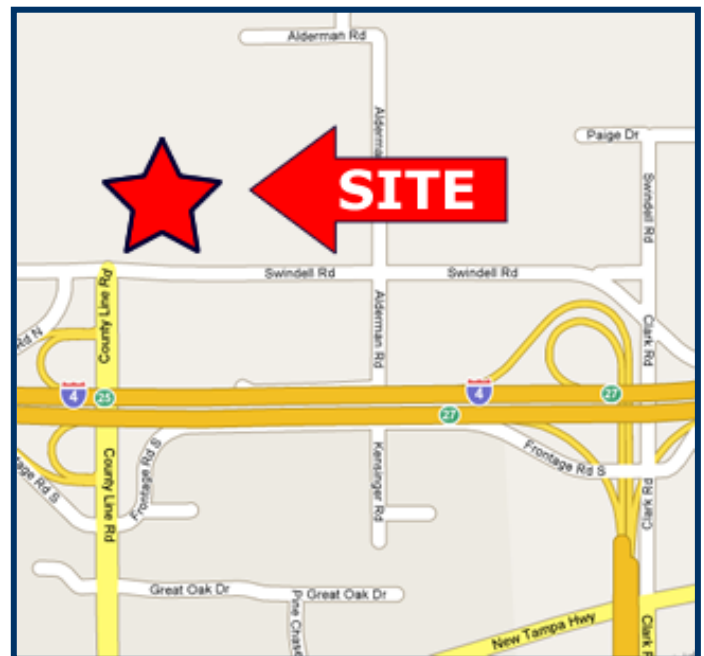
BUCKNER
COMMERCIAL PROPERTIES

AVAILABLE FOR LEASE



Features

- Available Square Feet: **Up To - 15,000 SF**
- Total Square Feet: 152,500 SF
- Construction: Concrete Tilt Wall
- Ceiling Height: 30' Clear
- Available Overhead Doors:
 - Ten (10) Dock High (9' x 10')
 - One (1) Oversize Drive-In Ramp Door (12' X 14')
- Column Spacing: 50' x 50'
- Building Bay Depth: 150' (7,500 sq. ft. bays)
- Fire Sprinkler System: ESFR
- Roof: TPO Roof System
- Floor Thickness: 6" Reinforced Concrete
- Warehouse Lighting: (Proposed T8 Fluorescent)
- Electrical Service: 800 Amps, Three Phase 480V
- Truck Court: 165 – 185 Feet
- Parking: 222 Total Spaces



Contact: David A. Buckner, SIOR

Office: (863) 686-7770 | Mobile: (863) 640-8843

E-mail: david@bucknercommercial.com | Website: www.bucknercommercial.com

Information concerning this offer is from sources deemed reliable, but no warranty is made as to the accuracy thereof.

Eagles Landing
Eagles Landing Drive
Lakeland, Florida 33810

BUCKNER
COMMERCIAL PROPERTIES

EXTERIOR



Contact: David A. Buckner, SIOR

Office: (863) 686-7770 | Mobile: (863) 640-8843

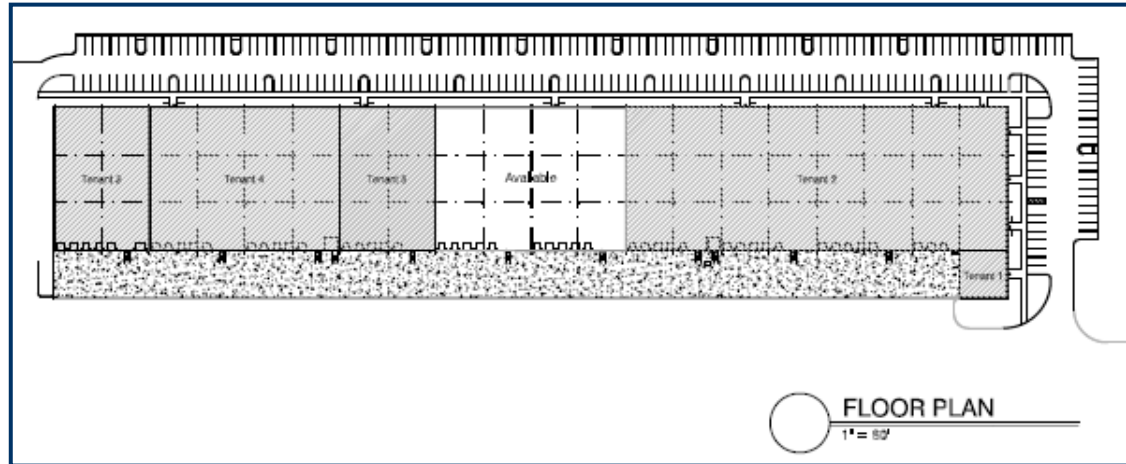
E-mail: david@bucknercommercial.com | Website: www.bucknercommercial.com

Information concerning this offer is from sources deemed reliable, but no warranty is made as to the accuracy thereof.

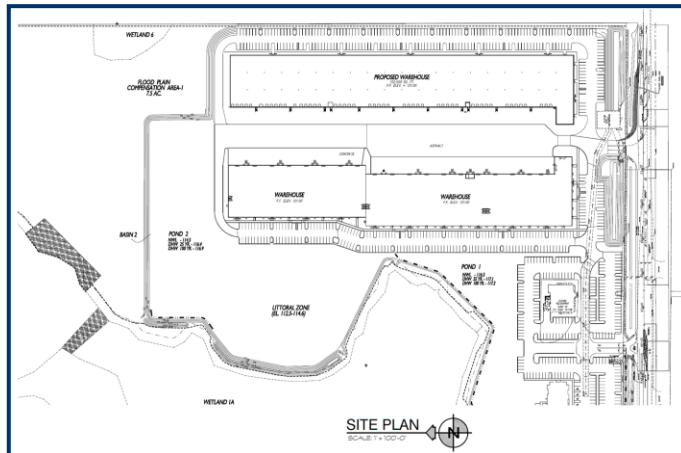
Eagles Landing
Eagles Landing Drive
Lakeland, Florida 33810

BUCKNER
COMMERCIAL PROPERTIES

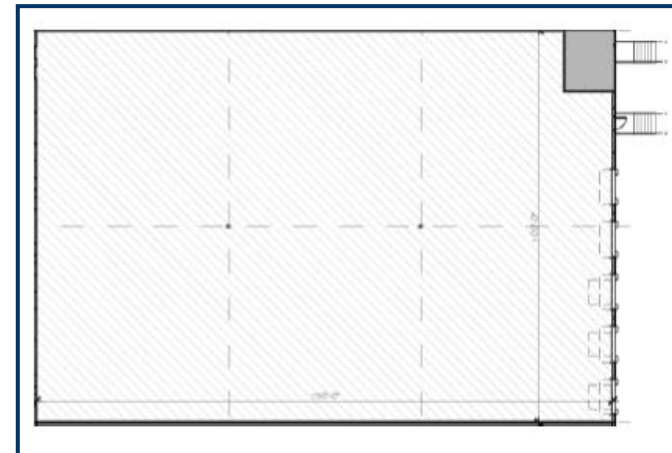
BUILDING PLAN



SITE PLAN



FLOOR PLAN



Contact: David A. Buckner, SIOR

Office: (863) 686-7770 | Mobile: (863) 640-8843

E-mail: david@bucknercommercial.com | Website: www.bucknercommercial.com

Information concerning this offer is from sources deemed reliable, but no warranty is made as to the accuracy thereof.